

Volume: 30 Issue: 2 Mar/Apr 2026

Newsletter



Established: 1997
ABN: 32788178963

Liverpool Art Society Inc.

www.liverpoolartsociety.com E: Contactus@liverpoolartsociety.com

President: Anne Picalovski 0414 244 839



“Approximations” – the Alpine Kea found in the South Island of New Zealand.” Oil on canvas by **Lorraine Maggs**. “The Alpine parrot – the Kea – inhabits the South Island of New Zealand. It is known for its mischievous, curious and destructive behaviour.” – Lorraine. Tourists are warned that the Kea often dive-bombs people and Lorraine has indicated this in her artwork.

This artwork is one of many exhibited by Lorraine in her solo exhibition, “From Shadow to Light”, at Heritage House Gallery, Merrylands RSL until 27 February.

What's On at LAS in Mar./Apr.

Tues 17 Mar	Social Lunch. Members & partners all welcome.	Brighton Lakes Golf Club, Moorebank.
Fri 27 March	Demonstration – Portraiture with Dave Thomas	10:30am Marsden Room, Powerhouse.
	General Meeting	1pm Liverpool Powerhouse (Marsden)
Tues 21 April	Social Lunch. Members & partners all welcome.	Brighton Lakes Golf Club

Annual Exhibition 2026

Exhibition Dates: Saturday, 19 September to Saturday, 24 October. **Launch:** Saturday 19 September.

Artwork Pick-up/Collection: Sunday, 25 October – 10am to 3pm.

Other dates are yet to be confirmed. (**Delivery:** Some time between 27 July & 10 August.)

Scholarship Exhibition – This year it will not be held at the same time as the LAS Exhibition but, instead, from Monday, 22 June to Friday, 17 July, in conjunction with the MilPra Scholarship Exhibition.

from the President ...



Hello L.A.S Members,

Well, we are back and raring to go this year for another eventful year. I am excited to see you all thrive personally and artistically as both go hand in hand.

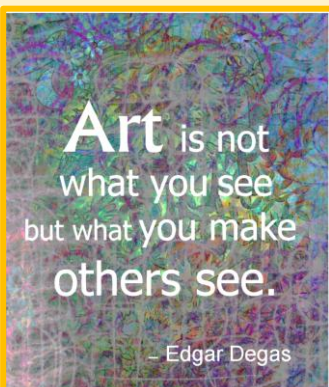
Our groups are back and are as busy as ever. I have to mention in particular the Boatshed group has had an influx of New Members and we on average now have at least 18 members each week enjoying the beautiful surroundings. Which is a credit to our long term members' hospitality.

Di Hallinan has given you all the dates for this Year's Exhibition and we will give you any upcoming news during the year. As you may have noticed Liverpool Powerhouse have changed things up by having our 2025 Scholarship winner Wenhan Wang earlier than our Annual Exhibition in September. His Solo Exhibition is on the 15th of June - 17th of July 2026.

I am excited to meet Dave Thomas in March, our first Demo of the year with his expertise on Portraiture techniques. Don't forget you are most welcome to attend our General Meeting after the Demo .Please feel free if you can't attend to send thru any news/events to contactus@liverpoolartsociety.com before our G.M so we can discuss possible ideas.

Looking forward to seeing you all soon!!

with Kind Regards, Anne Picalovski. President of Liverpool Art Society.



Monthly Social Lunches

It has been the practice for a group of LAS members to meet socially for lunch at the Brighton Lakes Golf Club, Moorebank on the third Tuesday of every month. It is a very picturesque setting to enjoy each other's company on a social basis. Partners & friends are welcome. We meet about 11:30am for lunch at about 12pm. Hope to see you there on 17 March. – Rod Harris.

Membership Fees 2026

Membership **Renewals** are due by 31 March for continuity of membership. **Please notify LAS of any change of email, phone number or address.**

Our First Demonstration for the Year.

with Internationally Renowned Portrait Artist **Dave Thomas**.

FRIDAY 27 March at the Marsden room, Liverpool Powerhouse.

10:30 am – 12:30pm. COST: \$10 LAS members. \$15 Non-members (or join on the day). Non-members welcome.

A General Meeting follows the demonstration, at 1pm.

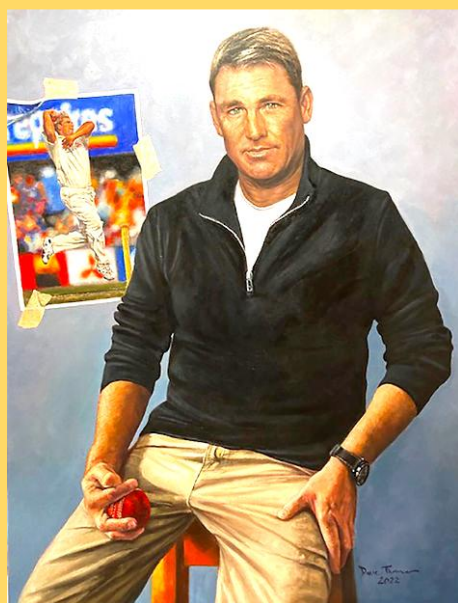
Dave Thomas was born in Wales, in 1950. He studied fine art in eminent Welsh and English colleges during the 1970's and his rapid rise of approval soon led to a wave of high-profile portrait commissions.

In the early 1980's, in order to progress his artistic talent and technique he travelled the world. His quest landed him in Italy where he was appointed Head of the Art Department of the prestigious, 'International School of Milan'.

Dave finally found his inspiration in the NSW Southern Highlands town of Bowral. He has been a finalist in the 'Archibald Prize' and twice finalist in the 'Doug Moran National Portrait Prize'. His portraits are housed in numerous esteemed venues across the country including Parliament House, Canberra.

Whether the commission is for Government, the corporate and service sectors or loved ones, Dave Thomas will always, produce nothing less than a world-class portrait.

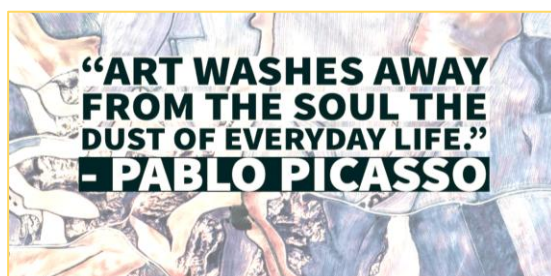
Dave was also well-known in the sporting field. He completed a series of famous sporting figures for the Bradman Museum in Bowral, including Shane Warne, shown below.



1. Shane Warne. 2. Victoria and "Spencer" – private commission 2020. 3. The Honourable Leo McLeay, 20th Speaker of the House of Representatives – commissioned by The Commonwealth of Australia. Displayed in Parliament House, Canberra.



General
Meeting
1:00pm -
2:30pm





CONGRATULATIONS to **Lorraine Maggs** on her solo exhibition, "From Shadow to Light: A Lifetime in Art," which celebrates her lifelong creative journey. The exhibition includes works from Lorraine's five-decade long career and is on display at Heritage House Gallery, Merrylands RSL, 8/12 Miller St., Merrylands until 27 February.

ART IS NOT ALWAYS ABOUT PRETTY THINGS. IT'S ABOUT WHO WE ARE, WHAT HAPPENED TO US, AND HOW OUR LIVES ARE AFFECTED.

Elizabeth Broun

CONGRATULATIONS

to **Ginger Jingzhe Li** on her exhibition, "Romance, Whimsy & Bloom." At the Moran Gallery, Sylvania. 19 February to 19 May. Ginger's exhibition explores the theme of cross-referencing the growth & vitality of women with the growth & prosperity of plants.



CONGRATULATIONS to the following LAS artists who have works on display in the Camden Kerbside Exhibition 2025 – **Rizwana Ahmed, Michele Arentz, Paul Brocklebank, Bob Gurney, Christine Miller and Corrado Peluso.**

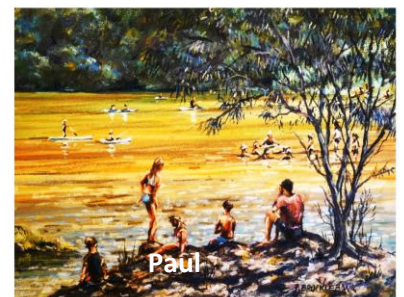
The exhibition which provides a colourful streetscape, along Argyle and Murray Streets in Camden, addresses the theme "Sunburst: A celebration of Light and Colour." Camden Council is to be applauded for bringing Art to the people, once again. Their Kerbside Exhibition of local artists is still on display. Pay Camden a visit and discover the artworks of Argyle & Murray Streets.



Rizwana



Christine



Paul

CONGRATULATIONS

to **Fangmin Wu (Jack)** on his selection as a finalist in the Greenway Art Prize 2025 with his painting, "In the Shade of Spring." Fangmin says he is drawn to the interplay of light & colour; "I explore the dialogue between light, form & emotion."



CONGRATULATIONS to **Gary Smith** on

his inclusion in the Dear Belly exhibition at the Yellamundie Gallery, Liverpool City Library, until 22 March 2026. His work "Sushi Express" is "mainly celebrating Japanese aesthetic and cuisine... the main idea behind this work ... is a celebration of Japanese culture." Gary is one of nine artists in the exhibition.



Do You Agree? Claude Monet said "Everyone discusses my art and pretends to understand, as if it were necessary to understand, when it is simply necessary to love it." Monet's philosophy encourages emotional connection rather than academic analysis. **What do you think?**

2026 Exhibition Information

LAS membership has increased to over 220 and we look forward to another inspiring exhibition with an amazing variety of talented works in September and October, this year. Start preparing.

Remember, you must have 12 months continuous membership, at the time of Entry, to be eligible for the Overall Winner or the Scholarship Prizes, so make sure you renew your membership before 31 March, 2026.

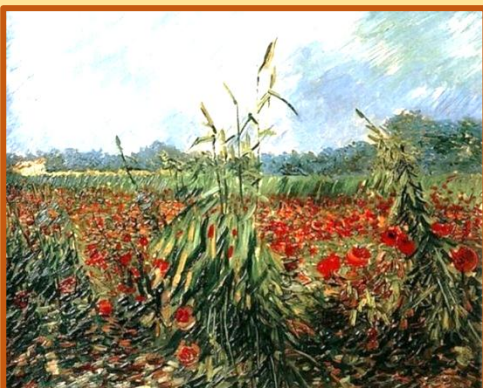
This year Liverpool Powerhouse is unable to provide space for Wen Han Wang's Scholarship exhibition at the same time as the Annual. It will be held 22 June – 17 July. Hopefully many of you can support Wen Han (John) and attend the Launch of his exhibition in June.

The Distance of Your Heart, Sydney CBD

Go on a treasure hunt across the city's northern end - artist Tracey Emin has placed more than 60 delicate handmade bronze bird sculptures along Bridge, Grosvenor and Kent Streets, perching on poles, above doorways, on awnings and statues. For Emin, the birds represent loneliness, and the artwork is centred around the words 'The distance of your heart' inscribed on a large stone bird bath in Macquarie Place Park -



The Distance of Your Heart by artist Tracey Emin.



Van Gogh called his brushwork 'the vibration of life.'
Each stroke records both the thing seen and the act of seeing.



7. The Invisible Man

This is the easiest street performance ever. You do not even have to show up. Just bring a pair of flip-flops and a funny sign. People are actually giving him money. He must be



6. Crocodile in the Parking Lot — Tom Bob

Tom Bob turned a boring concrete block into a happy green crocodile. He added legs and a tail on the ground to complete the look. Watch your step when you park your

LAS Committee

President: Anne Picalovski 0414244839 **Vice President/Public Officer** Rodney Harris 0403773979
Treasurer: Jenny Phillips **Secretary –** Anne Picalovski **Assistant Secretary –** Jenny Phillips
Ordinary Members: Selma Fida, Di Hallinan, Peter Thompson & Trish Thrift.
Newsletter Editor: Di Hallinan **Exhibition Project Managers:** Anne Picalovski; Jenny Phillips
Social Event Managers: Jenny Phillips, Anne Picalovski **Demonstration Co-ordinator:** **VACANT**

LAS Weekly Art Groups & Venues

LIFE DRAWING GROUP

(short & long poses). Every third Sunday, 10.30am-1.30pm, CPAC Performance Space. \$20 members \$30 non-members. CPAC – 1 Powerhouse Rd., Casula (entry via Shephard Street).

Peter Thompson: 0487 198 714 Pamela Rodoreda: (02) 96016078

WATERCOLOUR, ACRYLIC & DRAWING GROUP

Every Wednesday, 10.30am-2pm, Chipping Norton community Centre, cnr Ascot Drive and Central Avenue, Chipping Norton (next to Primary School). \$6 members \$9 non-members. Suzanne Drew: 0425838361

MIXED MEDIA / Oil & Acrylic Painting GROUP

Every Thursday, 10am-2pm, The Lakes Boatshed, cnr Ascot Drive and Homestead Drive, Chipping Norton (inside the parkland). \$6 members \$9 non-members. Linda Ferlazzo: 0418283150

CERAMICS GROUP (N.B. - MEMBERS ONLY)

Every Wednesday and Saturday, 10am-2pm, Ceramics Studio CPAC – 1 Powerhouse Rd., Casula (entry via Shepherd Street or Woodbrook Road). \$6 Selma Fida: 0417 434 446

A Big Thank You to our sponsors for their support...



Many thanks, also, to **PrintShop, Liverpool City Council & L.P.** for the printing of this newsletter.