

23rd LAS ANNUAL EXHIBITION 2020 – GUIDELINES

Please make sure you read the full Terms & Conditions on the Entry Form. You may **not** be eligible for prizes if you do not fulfil all of these conditions.

This year there is a new prize, the \$500 Werriwa Art Prize, generously sponsored by the office of Anne Stanley, Federal member for Werriwa. (See Clause 20 in Terms & Conditions.)

The History Prize has a \$500 First prize, from ANZ, and the History Society has generously increased the Second prize to \$100.

The Terms & Conditions, this year, state that the judge, Liverpool City Councillors and Council employees are **INELIGIBLE** for prizes. However they may exhibit (See Clause 21)

Major sponsors are **NOT** eligible for the prizes that they sponsor. (See Clause 22)

N.B. If you want to enter 2 artworks then, this year, you need to fill out **TWO** separate Entry Forms. You can no longer enter both works on the one form.

If you need help to complete the On-line Entry Form, you can attend a Help Day at CPAC on Saturday 19 September between 9.30am & 1.00pm.

Some paper Entry Forms will be available from CPAC Reception.

Entry fee payment must be made to LAS. Cash payments can be made to LAS at the Help Day or at The Boatshed on Thursdays 10am-2pm. **CPAC does NOT take payments.**

Covid-Safe procedures will be adopted at Delivery and at the Launch. You may be contacted about these. If health restrictions prevent a physical exhibition CPAC may present an on-line exhibition.

IMPORTANT DATES

PLEASE NOTE -These dates may be changed as a response to unforeseen circumstances and health restrictions.

Entries Open: Tuesday, 11 August 2020

Entries Close: 11:59pm, Friday 25 September 2020

Artwork Delivery: Saturday, 31 October 2020 and Sunday, 1st November from 9:30am - 3pm

Exhibition Launch: Saturday, 21 November, 11am - 2pm

Exhibition Closes: COB Wednesday, 27 January 2021

Artwork Collection: Saturday, 30 January 2021, from 9:30am to 3pm

Volume 24 Issue 5

September-October 2020

LIVERPOOL ART SOCIETY INC.

ABN: 32788178963

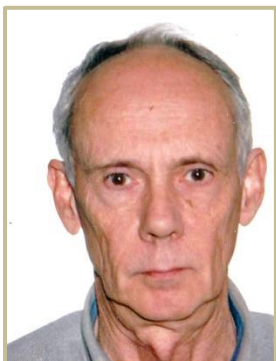
Box 32, 46 Governor Macquarie Drive, Chipping Norton NSW 2170

Website: www.liverpoolartsociety.com or Facebook.

Email: Contactus@liverpoolartsociety.com Contact PH: (02) 9601 2030 (John)



PRESIDENT'S POST



Welcome to the opening months of spring! Of longer, warmer days and their accompanying crisp nights. Hopefully, the terrible totals of Corona cases will no longer be the focus of our evening news and we can begin, with greater safety for ourselves our family and friends wellbeing, see a

return to more pleasing pursuits.

The past few weeks have involved much effort in the preparation of the documents and documentation attached to your involvement in our Annual Exhibition. A special, and sincere, thanks to Pamela and Di for their considerable efforts in finessing of this important, often unrecognized part, of the 23rd Art Exhibition.

As with every year there are changes and I encourage you to follow the instructions and read the Terms and Conditions of entry. You will no doubt be excited by the award, new this year, for one of our members work to appear on the Electorate Christmas Card for the Federal Members for Werriwa, Anne Stanley. To enter the work needs to relate to some past, or

present connected to Werriwa, one of the Foundation Electorates of our Federation. So much has occurred in the past 100 years in the electorate which once extended south to include Lake George. That connection preserved in the aboriginal peoples name for the lake – 'Werriwa', or so Dr Google advises.

Due to maintenance at CPAC there may well be changes to the delivery of works, and there will be a change in the collection with works remaining hung in either the Hopper or Switch gallery and returned to you from that gallery after the usual sign-out process. So, please carefully note the day, date, and time for collection as there is no storage available for 'later collection'.

This edition of your Newsletter comes from the pen, the computer of Di after the sad and sudden loss of our dear friend and colleague Gil. We need someone who is willing to take over the compilation of the five Newsletters each year, and someone willing to arrange the three or four demonstrations each year – the vital education and introduction to different forms and methods of artistic expression. I or the Committee can provide further information and detail.

So, welcome that time of the year vineyard owners term budfest ! – John Tregoning

2020 ANNUAL EXHIBITION

ENTRIES CLOSE Friday 25 September.

Members who need assistance to complete the on-line Entry Form can attend a **Help Day** at Casula Powerhouse on Saturday 19 September between 9.30am & 1.00pm.

Members who are unable to do on-line Entry can collect a paper Entry Form from Casula Powerhouse Reception.

ARTWORK DELIVERY Saturday 31 October or Sunday 1 November at CPAC between 9.30am & 3.00pm.

Members may be contacted about the COVID-Safe procedures to be adopted for the Delivery of artworks.

EXHIBITION LAUNCH Saturday 21 November 11.00am to 2.00pm

N.B. These dates may change as a response to health restrictions.

GENERAL MEETING

15 October

10 am

Chipping Norton Community Centre

Please wear a mask

MEMORIES OF GIL

Marie Claire Gilberte Farla - 1969 - 2020
(Gigi to her family.)

Gil joined LAS in 2009 and served enthusiastically & successfully as a Committee member, Events Organiser, Demonstration & Workshop Coordinator and Newsletter Editor. She initiated the very successful monthly Social lunches at Sporties. Gil won last year's Scholarship Prize and her Solo Exhibition will go ahead in the Marsden Gallery, CPAC, on 21 November, as planned.

"LAS will sorely miss her gentle, bubbly personality, her creative flair, and her warm and caring friendship." – John

"I miss your gentle smile, your cheeky humour and your loyal friendship. Fly high, dearest Gil" -

- Di

'Gil was loved by everyone who knew her. She was gentle and caring, always smiling and full of fun. A very talented artist, clever and professional in everything she did. I miss my beautiful friend, my confidante, my inspiration.' - Linda

"Gil was kind, clever & hardworking and her quick wit and sense of humour made her great fun - I will miss her very much." Pamela xx



Gil's last message to her family. "...Every time you see a flower that opens, that is my sign that I will love you always" - Gigi



CONGRATULATIONS to LAS members who were successful in

CPAC's "Hope I Win \$500" Competition. Gil Farla was Runner Up in the "Funny – Make Us Laugh" category with her "New Extinction – Toilet Paper" (see image at right) *"Near extinction occurred when this species - "Toilet Paper", diminished because of over exploitation from human use during the COVID19 panic. - The last roll in my household was protected under glass"* – Gil

LAS Finalista were: Lesley Richman, Glen op den Brouw (x 2), Fangmin Wu, Natalie Anderson (x 2), Kerry Walsh, Graham Jordan, Gil Farla (x 3), Terry Dolan, Rafiqur Khan & Svetlana Panov. Such talent from LAS members.

CONGRATULATIONS also to LAS members whose works were exhibited in the "Past Winners" Exhibition at CPAC until 20 September – Sally Atkins, Glenda Carter, Rebecca Brady, Pamela Rodoreda, Bridget Dolan, Hedar Abadi & Federico Rekowski.



Gil's entry.

The EARTH
without ART is
just "Eh"

SOUTH WESTERN SYDNEY "CULTURAL URGENCY" (from SMH 29/7/20)



Craig Donarski, Director of the Casula Powerhouse Arts Centre said local government had been hit hard by COVID-19 and was not

in a position to adequately fund programming in existing venues - one of the fastest, most cost-effective and efficient ways to support

artists and provide arts and culture experiences to audiences.

Arts centres in Blacktown, Campbelltown, Casula, Fairfield and Penrith are predominantly council-funded and reliant on ticket sales and cafe proceeds, which have evaporated with social distancing rules and shutdowns. None are eligible for JobKeeper.

"Putting all the artistic and cultural eggs in Parramatta's basket doesn't make for a western Sydney strategy." Craig said, "It was often forgotten that western Sydney is so much bigger than Parramatta, and that funding needed to be pushed out to the region's edges."

"No painting is ever finished, it is only abandoned." – Jeffrey Smart.

CPAC Exhibitions September, October 2020

Collection Highlights – Past Winners Until 20 September

Get inspiration for this year's Liverpool Art Society exhibition by visiting 'Collection Highlights – Past Winners.' This exhibition includes past winners of the LAS Overall Winner prize

Bittersweet 15 August –27 September Extended Digital Program from 28 September

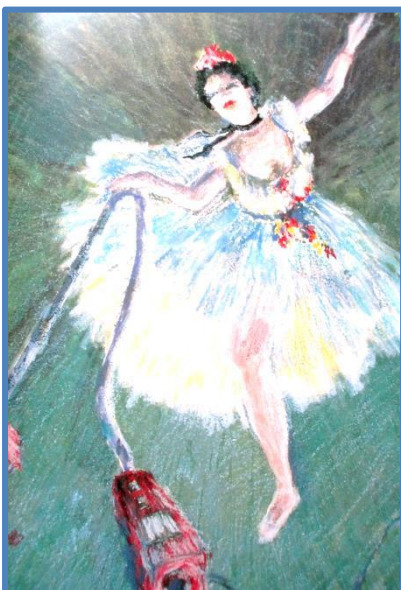
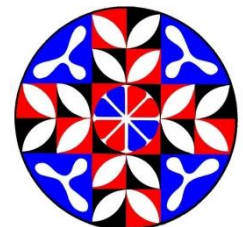
'Bittersweet' is a showcase of contemporary Fijian art and storytelling.

ARTIST OPPORTUNITIES The 66th Blake Art Prize

Deadline: 12 October 2020

This is your chance to provoke, outrage and encourage conversations about religion and spirituality. Submissions for The 66th Blake Prize close 12 October. Entries are not restricted to works related to any faith or artistic style. Visit CPAC website for more info.

<http://bit.ly/blakeprize2020callout>



Mrs Degas vacuums the floor.
from "Great Housewives of Art"
by Sally Swain.

POSITIONS VACANT

Due to covid-19 and advice from Fair Trading this year's AGM was deferred until August next year. The current Management Committee will continue in their positions until then. However there are two vacancies which need to be filled -

Newsletter Editor. We have a volunteer who has offered to assist by taking over the design component but we are seeking an Editor to collect articles, collate notices & events, organise deadlines, arrange printing with CPAC and organise distribution. Help and guidelines will be provided.

Demonstration Co-ordinator. This involves contacting artists to organise demonstrations, providing information for the newsletter and arranging payment. A list of potential artists as well as assistance can be provided. Don't be shy. If interested please contact John on 9601 2030

PLEIN AIR DAY

Why not bring your art materials along to the General Meeting on 15 October and join in a Plein Air afterwards until 2pm. Unfortunately due to covid there will not be a BBQ. You need to provide your own lunch.

Contact Us:

President: John Tregoning LiverpoolArtSocietyPresident@gmail.com (02) 9601 2030

Vice President: Di Hallinan: (02) 9602 9217

Treasurer: Terry Dolan: 0416 211 855

Secretary - Social Media and Website : Tania Saeed: 0407 774 999 Tanveera@msn.com

Secretary - Membership: Jenny Phillips Lasmemberships@outlook.com

Secretary - Minutes + (Dem & Workshop Assistant): Linda Ferlazzo 0418 283 150

Demonstration and Workshop Co-ordinator VACANT

Newsletter Editor: VACANT (Acting Editor): Di Hallinan hallinandi2@gmail.com

Exhibition Project Manager: Pamela Rodoreda (02) 9601 6078,

Public Officer: Suzanne Drew 0425 838 361

Committee Members: Selma Fida, Sam Formosa

LAS Weekly Art Groups & Venues:

LIFE DRAWING GROUP **Suspended until further notice due to covid restrictions**

(short pose). Every Tuesday, 7pm-9pm, CPAC Theatre 2. \$10 members \$15 non-members.

(long pose). Every third Sunday, 10.30am-1.30pm, CPAC Theatre 2. \$15 members \$20 non-members.

CPAC – 1 Powerhouse Rd., Casula (entry via Shephard Street).

Peter Thompson: 0411717214 Pamela Rodoreda: (02) 96016078

WATERCOLOUR, ACRYLIC & DRAWING GROUP

Every Wednesday, 10.30am-2pm, Chipping Norton community Centre, cnr Ascot Drive and Central Avenue, Chipping Norton (next to Primary School). \$6 members \$9 non-members. Suzanne Drew: 0425838361

MIXED MEDIA GROUP

Every Thursday, 10am-2pm, The Lakes Boatshed,

cnr Ascot Drive and Homestead Drive, Chipping Norton (inside the parkland). \$6 members \$9 non-members. Linda Ferlazzo: 0418283150

CERAMICS GROUP

Every Wednesday and Saturday, 10am-2pm,

Ceramics Studio CPAC – 1 Powerhouse Rd., Casula (entry vis Shepherd Street). \$6 members \$9 non-members. Selma Fida: 0417434446

WHAT'S ON

19 September	HELP DAY with on-line Exhibition Entries	CPAC	9.30 am - 1 pm
25 September	Exhibition Entries Close	LAS CPAC on-line	5pm (mail or cash) 11.59 pm
15 October	General Meeting Plein Air	Chipping Norton Community Centre	10 am Plein Air until 2pm
31 October & 1 Nov	Delivery of artworks	CPAC	9.30 am - 3.00 pm
21 November	Exhibition Launch	CPAC	11 am - 2 pm

LIVERPOOL
picture framing

Ann Pham

(02) 9824 0440
LPRAMING@HOTMAIL.COM
3/60 MEMORIAL AVE. LIVERPOOL NSW 2170

Many thanks to our Sponsors and to Council Print Shop (Rhonda & Doug) for the printing of LAS newsletters.

**CASULA
POWERHOUSE
ARTS CENTRE**



The City Of Liverpool & District
Historical Society Inc.
Est. 1939



**LIVERPOOL
CITY
COUNCIL**

